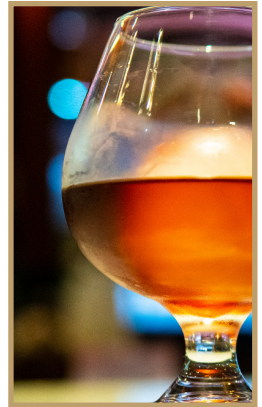
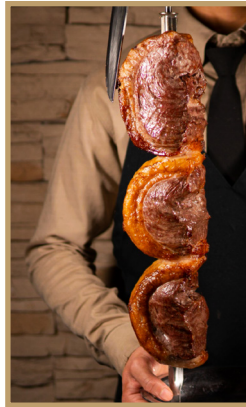


GROUP DINING PACKAGES



Our prix-fixe menu consists of over 15 different cuts of meats including Prime beef, lamb, pork, chicken, shrimp and sausage, with over thirty fresh items on our gourmet salad bar, and traditional Brazilian side dishes. We'd be delighted to offer you our Group Dining Package options. These packages are available for groups of **12+ adult guests** and can be customized to suit your needs, budget and preferences.

ESTÂNCIA EXPERIENCE PACKAGE

Endless meats, salads and side dishes.

One dessert of your choice.

Fountain beverages, fresh lemonade, iced tea and regular coffee

2.5 hours of hosted premium Open Bar. Includes house wine, beer and cocktails.

Dinner - \$126 | Brunch - \$105 | Lunch - \$102

PACKAGE 1

Endless meats, salads and side dishes.

Fountain beverages, fresh lemonade, iced tea and regular coffee

One dessert of your choice.

Choice of 3 alcoholic drinks per person. Includes house wine, beer and cocktails.

Dinner - \$115 | Brunch - \$94 | Lunch - \$91

PACKAGE 2

Endless meats, salads and side dishes.

Fountain beverages, fresh lemonade, iced tea and regular coffee

One dessert of your choice.

Choice of 2 alcoholic drinks per person. Includes house wine, beer and cocktails.

Dinner - \$102 | Brunch - \$81 | Lunch - \$78

PACKAGE 3

Endless meats, salads and side dishes.

Fountain beverages, fresh lemonade, iced tea and regular coffee

One dessert of your choice.

Dinner - \$76 | Brunch - \$55 | Lunch - \$52

PACKAGE 4

Endless meats, salads and side dishes.

Fountain beverages, fresh lemonade, iced tea and regular coffee

Dinner - \$66 | Brunch - \$45 | Lunch - \$42

ADD ON'S

- Shrimp Cocktail - \$22
- Lobster Tail - \$55
- Wagyu - MKT

- Substitute meats for shrimp and salmon only for a pescatarian meal. | Package prices will remain the same.
- Remove all meats for a vegetarian/vegan option. | Package price will be discounted.
- Add 2.5 hours of Hosted Premium Open Bar to package 3 or 4 for +\$50 per person.
- Prices are per person and it is not inclusive of 8.25% sales tax, 20% gratuity and 3% group dining admin fee.

PRIVATE DINING

4 Private Rooms | Full Restaurant Buyout | 100% Customizable



Estância Room | 12 Guests



Austin Room | 20-40 Guests



Gaucho Room | 40-50 Guests



Arboretum Room | 50-60 Guests

Arboretum, Gaucho, and Estancia Room combined can accommodate up to 120 guests. Full restaurant buyout can accommodate up to 250 guests.

With four private rooms to choose from, Estância has the space available to accommodate intimate parties as well as large gatherings of any group size, up to 250 guests. Each private room is equipped with audio and video equipment, along with microphone at no additional cost. Regardless of the occasion, rest assured you and your guests will receive an unparalleled experience of Brazilian culture, delectable foods, and unmatched service.